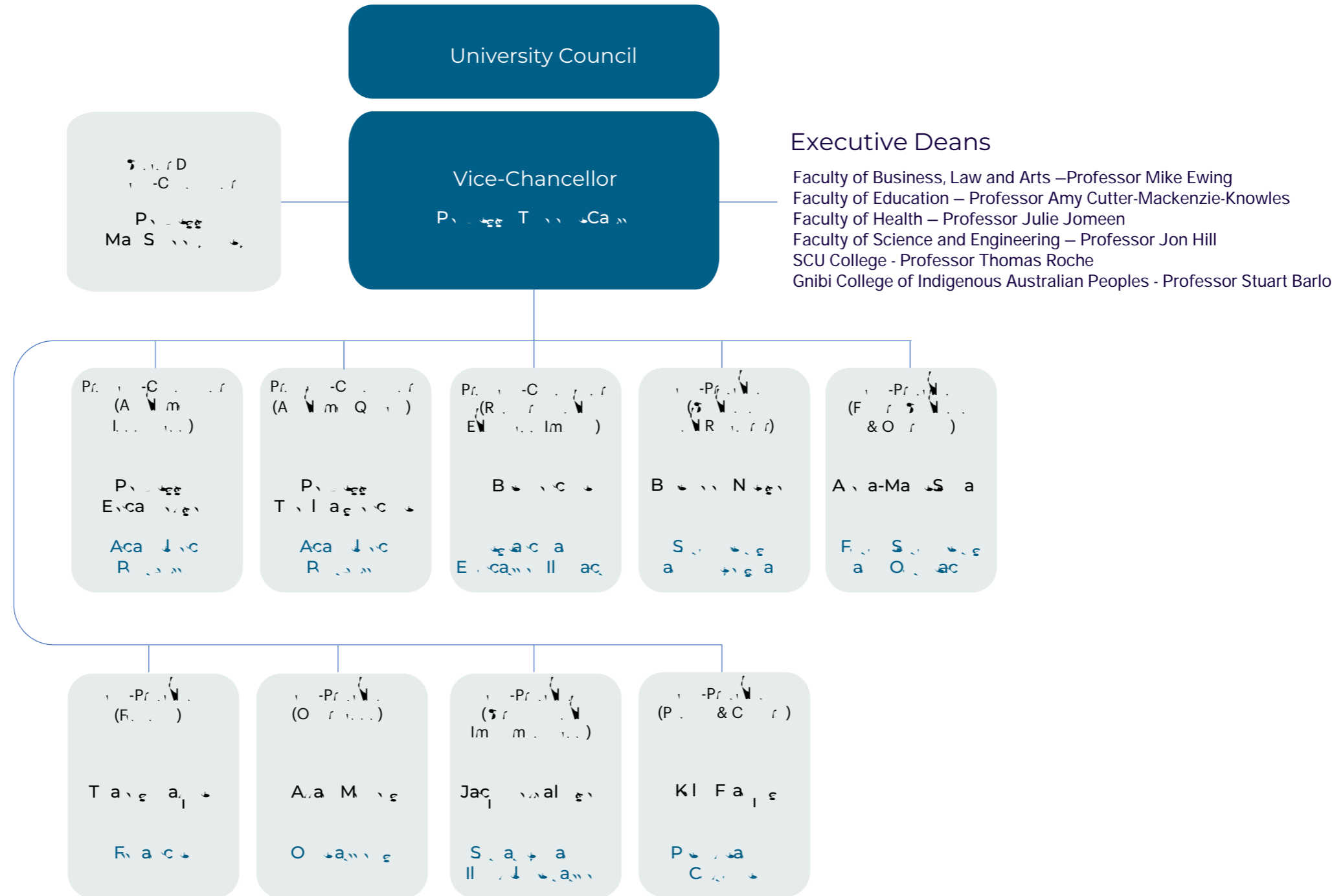


Organisational Structure



Executive Deans

- Faculty of Business, Law and Arts – Professor Mike Ewing
- Faculty of Education – Professor Amy Cutter-Mackenzie-Knowles
- Faculty of Health – Professor Julie Jomeen
- Faculty of Science and Engineering – Professor Jon Hill
- SCU College - Professor Thomas Roche
- Gnibi College of Indigenous Australian Peoples - Professor Stuart Barlo